

Mueller Co. manufactures several different small drilling and stopping machines for drilling or cutting holes 1/8" to 3-3/4" in steel or cast iron pipe, and stopping off tees and fittings up to 4". Machines are available in hand or power operated models with a wide selection of drills and shell cutters.

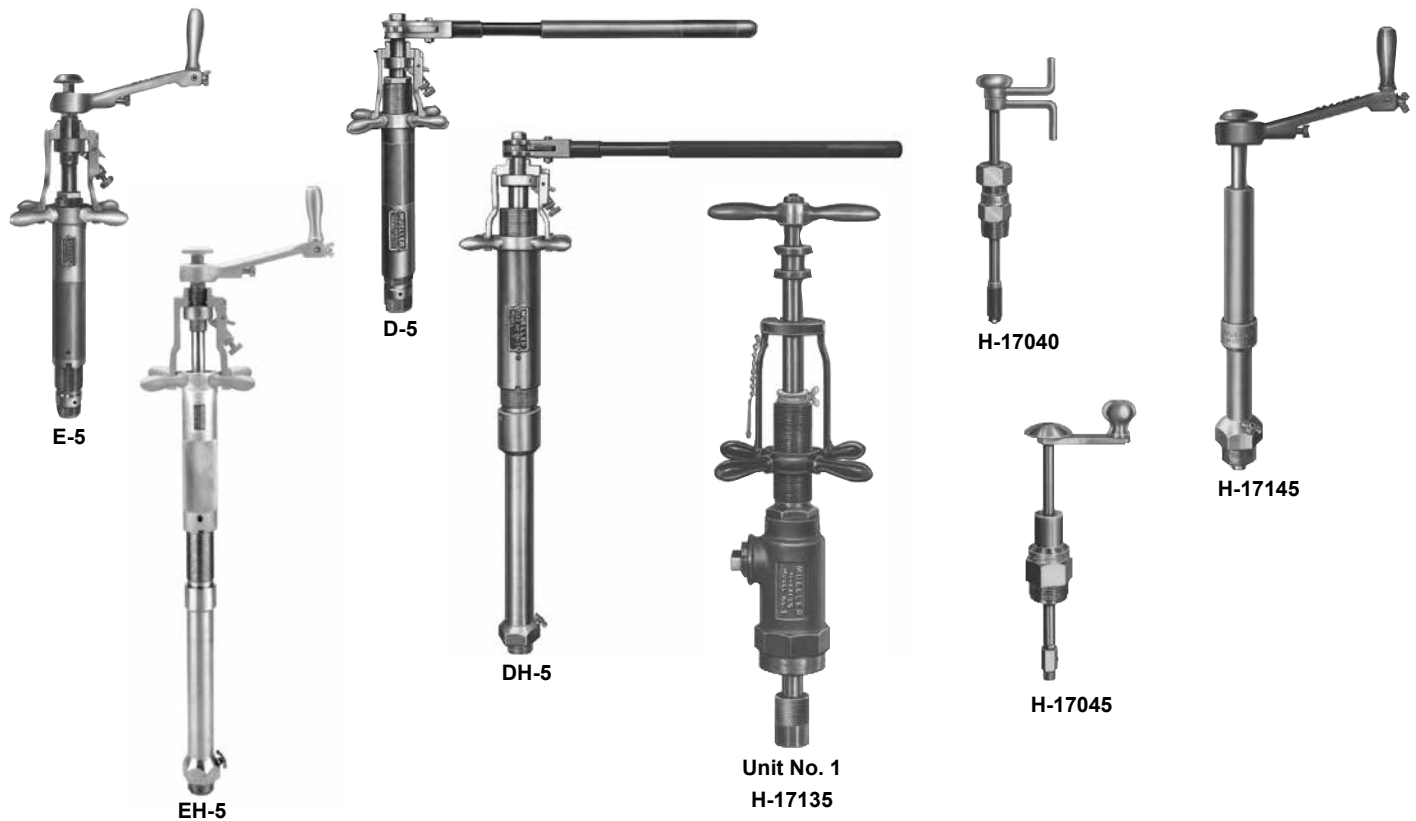
Mueller Co. has built these machines to take the rough handling such equipment usually receives during normal use. They are designed to provide years of service with proper maintenance. Another important advantage of Mueller® machines is the similarity in basic design and operating procedures for each. This makes it easier to train personnel in the use of the various drilling machine models.

These machines are part of a complete system of NO-BLO® Equipment, Products and Methods developed by Mueller to perform the variety of operations needed to install, extend and maintain today's gas systems.

The design of each part of this system helps everything work together efficiently for strong, leak-tight NO-BLO® Installations.

Small machine selection guide

Machine	Drill or cutter capacity	Maximum working pressure*
E-5™ (039330)	1/8" - 2"	500 psig
EH-5™ (039341)	1/8" - 2"	1200 psig
D-5™ (039305)	1/8" - 3-3/4"	500 psig
DH-5™ (039315)	1/8" - 3-3/4"	1200 psig
Unit No. 1 H-17135	N/A	125 psig
H-17040	N/A	125 psig
H-17045	N/A	125 psig
H-17145	N/A	1200 psig



*This is the maximum working pressure of the machine at 100° F.

Rev. 8-17 Shaded area indicates changes

Mueller® E-5™ Machine — for drilling and stopping operations under pressure

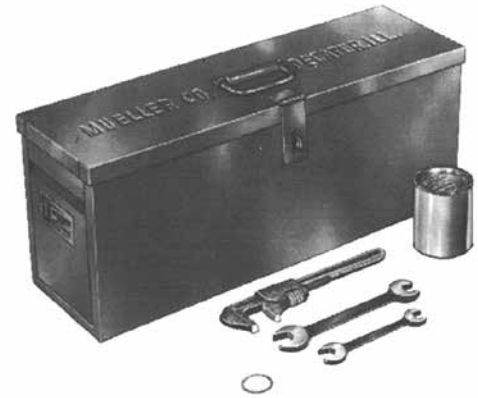
- Catalog number – **39330**
- Hand, air or hydraulic power operation
- Used to install up to 2" tees, Save-A-Valve® Drilling Nipples and Line Stopper Fittings
- Has boring bar locking mechanism for safe, positive operation
- Test plug feature allows for stack pressurization
- 12-1/8" (308 mm) boring bar travel
- 500 psig (3447 kPa) maximum working pressure at 100 F (38 C)

NOTE: The working pressure or temperature rating is reduced accordingly if any attachment, valve, or fitting subjected to pressure or temperature during the drilling operation has a maximum working pressure or temperature rating less than that specified above.



Equipment furnished with each E-5 Machine:

- Metal Storage Chest (**580971**)
- Reversible Ratchet Handle (**580897**)
- Body Gasket (**47756**)
- Adjustable Wrench (**91664**)
- Two double open end Wrenches (9/16"x11/16" **59787** and 3/4"x13/16" **96536**)
- Cutting Grease (**88366**)
- Operating Instruction Manual (**Form 9335**)

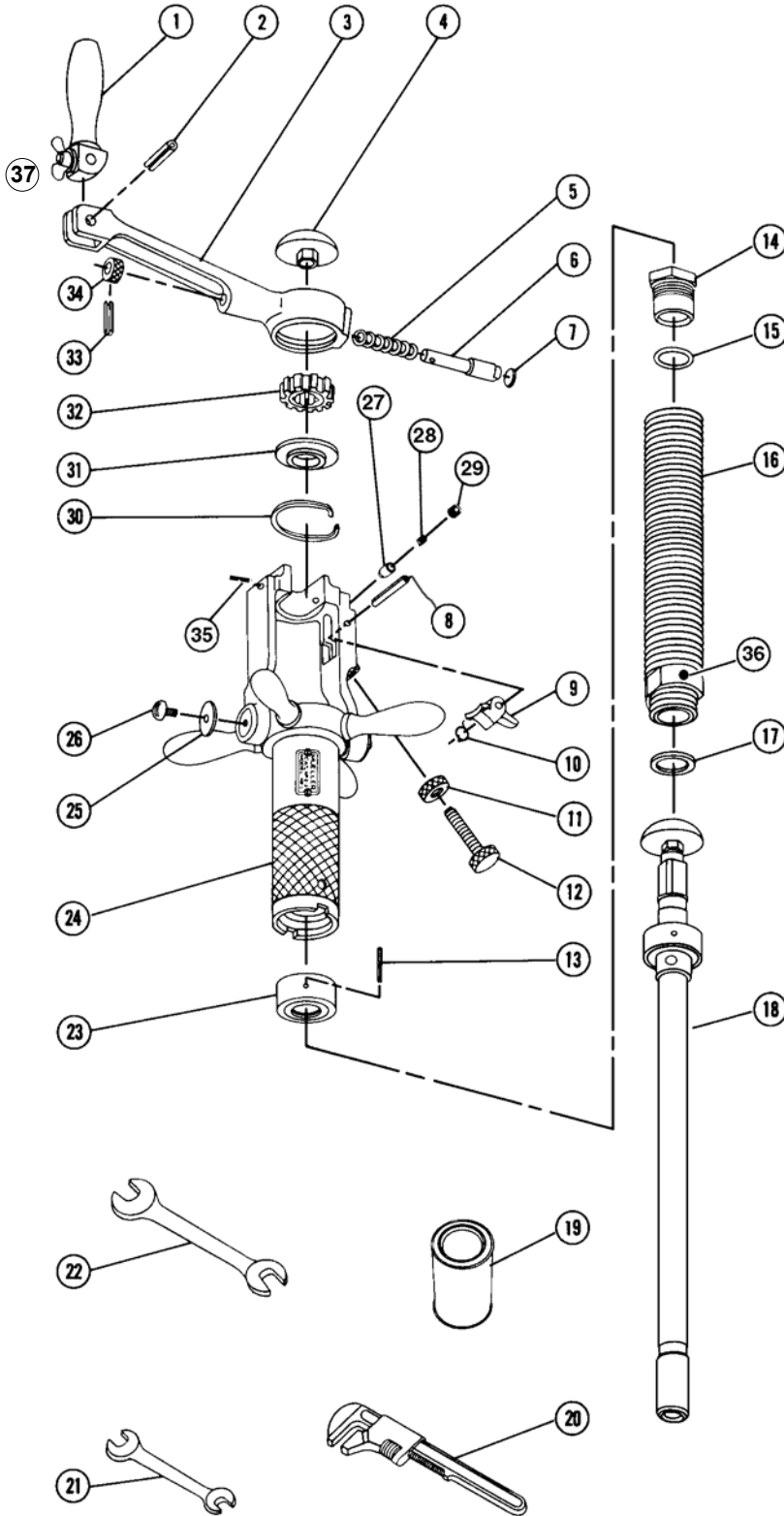


Weight	
Total shipping weight	49 lbs.
Machine only weight	32 lbs.

MUELLER® NO-BLO® Operations performed by the MUELLER® E-5™ Machine

Item	Size*					Mueller NO-BLO Operation
	3/4"	1"	1-1/4"	1-1/2"	2"	
Mueller NO-BLO Service Tees	3/4"	1"	1-1/4"	1-1/2"	2"	Drill main, insert or extract completion plug, make stop-off
Mueller NO-BLO Service Stop Tees	1/2"	3/4"	1"	1-1/4"	2"	Drill main, insert or extract stem and bushing, recondition body seat
Mueller NO-BLO Curb Stop Tees	-	1"	1-1/4"	2"	-	Drill main, insert or extract stem, recondition body seat
Mueller NO-BLO Steel Valves	-	1"	-	-	-	Insert or extract stem, recondition body seat
Mueller NO-BLO Service Line Stopper Fittings	3/4"	1"	1-1/4"	-	-	Drill main, insert or extract completion plug, make stop-off
Mueller Low Pressure Line Stopper Fittings	3/4"	1"	1-1/4"	2"	-	Drill main, insert or extract completion plug, make stop-off
Mueller Save-A-Valve Drilling Nipples	3/4"	1"	1-1/4"	1-1/2"	2"	Drill main, insert or extract completion plug

*The size of Mueller NO-BLO Tees, as used in this table, refers to the size of the inlet. The size of Mueller Steel Valves, Service Line Stopper Fittings, Low Pressure Line Stopper Fittings and Save-A-Valve Drilling Nipples refers to the nominal size.



Item No.	Part No.	Part Name
1	80085	Crank Handle
2	500635	Handle Pin
3	51484	Handle
4	83431	Knob
5	37883	Spring
6	51426	Ratchet Dog
7	51427	Plug
8	502027	Pivot Arm Pin
9	502025	Pivot Arm
10	502026	Pivot Arm Spring
11	502029	Lock Nut
12	502028	Operating Screw
13	48130	Friction Collar Pin
14	51432	Packing Gland
15	46726	O-ring
16	503159	Body
17	47756	Body Gasket
18	580999	Boring Bar Complete
19	88366	Cutting Grease
20	91664	Adjustable Wrench
21	59787	Wrench 9/16"x 11/16"
22	96536	Wrench 3/4" X 13/16"
23	580610	Friction Collar
24	580895	Feed Tube And Yoke
25	537126	Bushing (2)
26	312443	Retaining Screw (2)
27	500851	Detent Pin (2)
28	59810	Spring (2)
29	305006	Screw
30	51428	Retaining Ring
31	503163	Wheel Bushing
32	503162	Ratchet Wheel
33	500803	Operating Pin
34	37863	Detent Knob
35	312598	Detent Screw
36	41435	Body Plug
37	580897	Ratch Handle Complete

Metal Storage Chest 580971 (not illustrated)

NOTE: These illustrations are for parts identification only.
DO NOT use these illustrations for assembly or disassembly
of machine.
Contact Mueller Customer Service Center for assistance.

Rev. 8-17 Shaded area indicates changes

Mueller® EH-5™ Machine — for drilling and stopping operations under pressure

- Catalog number – **39341**
- Hand, air or hydraulic power operation
- Used to install up to 2" Tees, Save-A-Valve® Drilling Nipples, and Line Stopper Fittings
- 12-1/8" (308 mm) boring bar travel
- Balanced pressure feature. Refer to machine operating manual for important precautions.
- 1200 psig (8273 kPa) maximum working pressure at 100 F (38 C)

NOTE: The working pressure or temperature rating is reduced accordingly if any attachment, valve, or fitting subjected to pressure or temperature during the drilling operation has a maximum working pressure or temperature rating less than that specified above.



Equipment furnished with each EH-5 Machine:

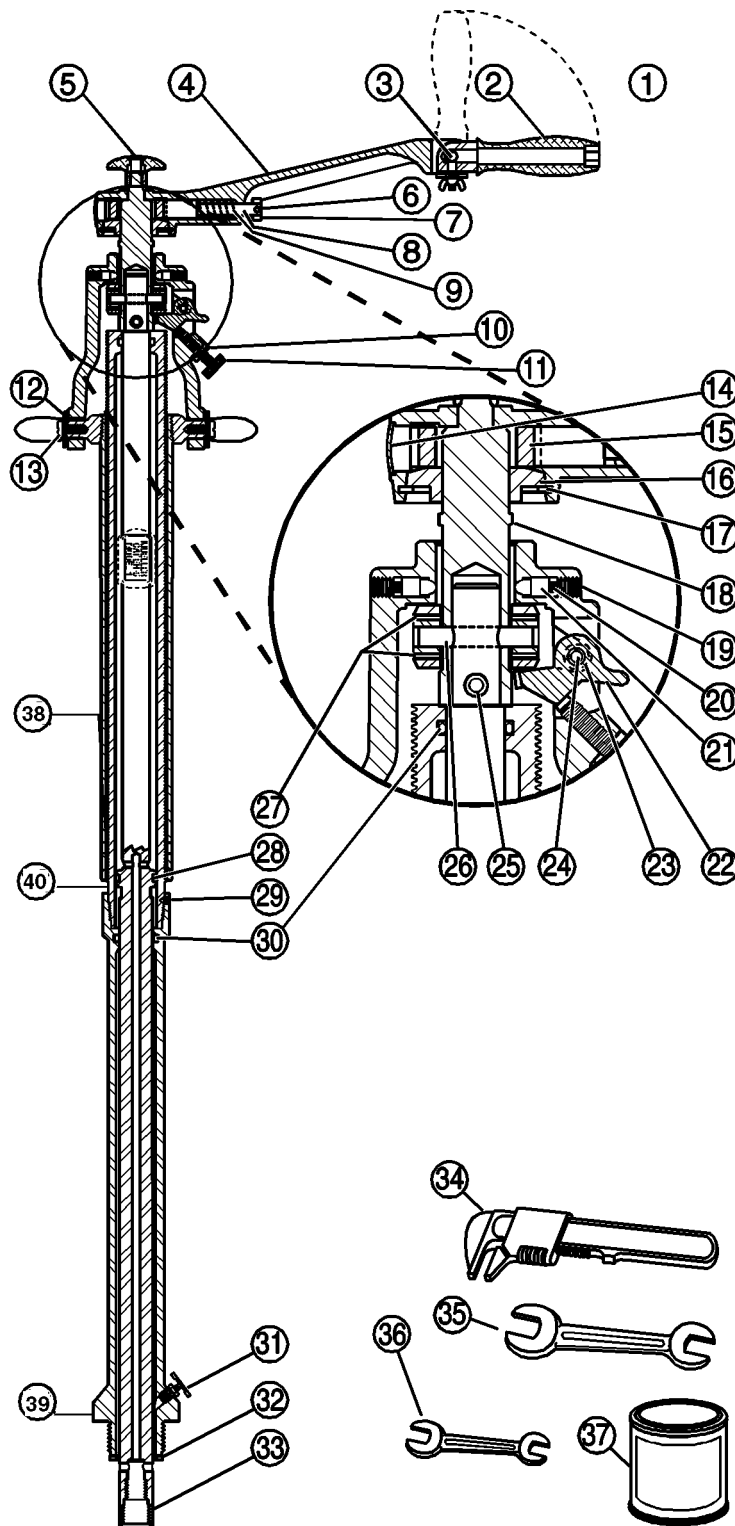
- Wooden Storage Chest (**311658**)
- Reversible Ratchet Handle (**580897**)
- Body Gasket (**47756**)
- Adjustable Wrench (**91664**)
- Two double open end Wrenches (9/16"x11/16" **59787** and 3/4"x13/16" **96536**)
- Cutting Grease (**88366**)
- Operating Instruction Manual (**Form 9675**)

Weight	
Total shipping weight	55 lbs.
Machine only weight	34 lbs.

Mueller® NO-BLO® Operations performed by the MUELLER® EH-5 Machine

Item	Size*					Mueller NO-BLO Operation
Mueller NO-BLO Service Tees	3/4"	1"	1-1/4"	1-1/2"	2"	Drill main, insert or extract completion plug, make stop-off
Mueller NO-BLO Service Stop Tees	1/2"	3/4"	1"	1-1/4"	2"	Drill main, insert or extract stem and bushing, recondition body seat
Mueller NO-BLO Curb Stop Tees	-	1"	1-1/4"	2"	-	Drill main, insert or extract stem, recondition body seat
Mueller NO-BLO Steel Valves	-	1"	-	-	-	Insert or extract stem, recondition body seat
Mueller NO-BLO Service Line Stopper Fittings	3/4"	1"	1-1/4"	-	-	Drill main, insert or extract completion plug, make stop-off
Mueller Low Pressure Line Stopper Fittings	3/4"	1"	1-1/4"	2"	-	Drill main, insert or extract completion plug, make stop-off
Mueller Save-A-Valve Drilling Nipples	3/4"	1"	1-1/4"	1-1/2"	2"	Drill main, insert or extract completion plug

*The size of Mueller NO-BLO Tees, as used in this table, refers to the size of the inlet. The size of Mueller Steel Valves, Service Line Stopper Fittings, Low Pressure Line Stopper Fittings and Save-A-Valve Drilling Nipples refers to the nominal size.



Item No.	Part Number	Part Name
1	580897	Ratchet Handle Complete
2	80085	Crank Handle
3	500635	Handle Pin
4	51484	Handle
5	83431	Knob Complete
6	500803	Operating Pin
7	37863	Detent Knob
8	51426	Ratchet Dog
9	37883	Spring
10	502029	Lock Nut
11	502028	Operating Screw
12	537126	Bushing (2)
13	312443	Stem Fastener (2)
14	51427	Freeze Plug
15	503162	Ratch Wheel
16	503163	Wheel Bushing
17	51428	Retaining Ring
18	503160	Boring Bar (Top)
19	305006	Hex Socket Set Screw (2)
20	59810	Spring (2)
21	500851	Detent (2)
22	502025	Arm
23	502026	Spring
24	502027	Roll Pin
25	503158	Roll Pin
26	48130	Friction Collar Pin
27	580610	Friction Collar
28	79345	O-ring
29	96993	Set Screw
30	79350	O-ring (2)
31	40870	Drain Valve
32	47756	Fiber Gasket
33	526550	Boring Bar (Bottom)
34	91664	Adjustable Wrench
35	96536	Wrench 3/4" X 13/16"
36	59787	Wrench 9/16"x 11/16"
37	88366	Cutting Grease
38	681570	Feed Tube And Yoke
39	526552	Body
40	526551	Cylinder

Wooden Storage Chest 311658 (not illustrated).

NOTE: These illustrations are for parts identification only.
DO NOT use these illustrations for assembly or disassembly of machine.

Mueller Co. offers a machine repair service.
Contact Mueller Customer Service Center for details.

Rev. 12-12 Shaded area indicates changes

Mueller® D-5™ Machine — for drilling and stopping operations under pressure

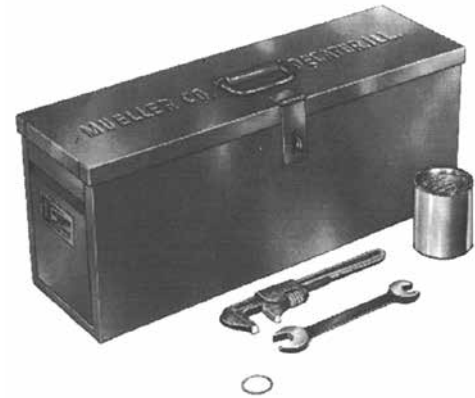
- Catalog number – **39305**
- Hand, air or hydraulic power operation
- Used to install up to 4" Tees, Save-A-Valve® Drilling Nipples, and Line Stopper Fittings
- Has boring bar locking mechanism for safe, positive operation.
- Test plug feature allows for stack pressurization.
- 14" (356 mm) boring bar travel
- 500 psig (3447 kPa) maximum working pressure at 100 F (38 C).



NOTE: The working pressure or temperature rating is reduced accordingly if any attachment, valve, or fitting subjected to pressure or temperature during the drilling operation has a maximum working pressure or temperature rating less than that specified above.

Equipment furnished with each D-5 machine:

- Metal Storage Chest (**580969**)
- Reversible Ratchet Handle (**85308**)
- Body Gasket (**33278**)
- Adjustable Wrench (**91664**)
- Double open end Wrench (**58196**)
- Cutting Grease (**88366**)
- Operating Instruction Manual (**Form 9335**)

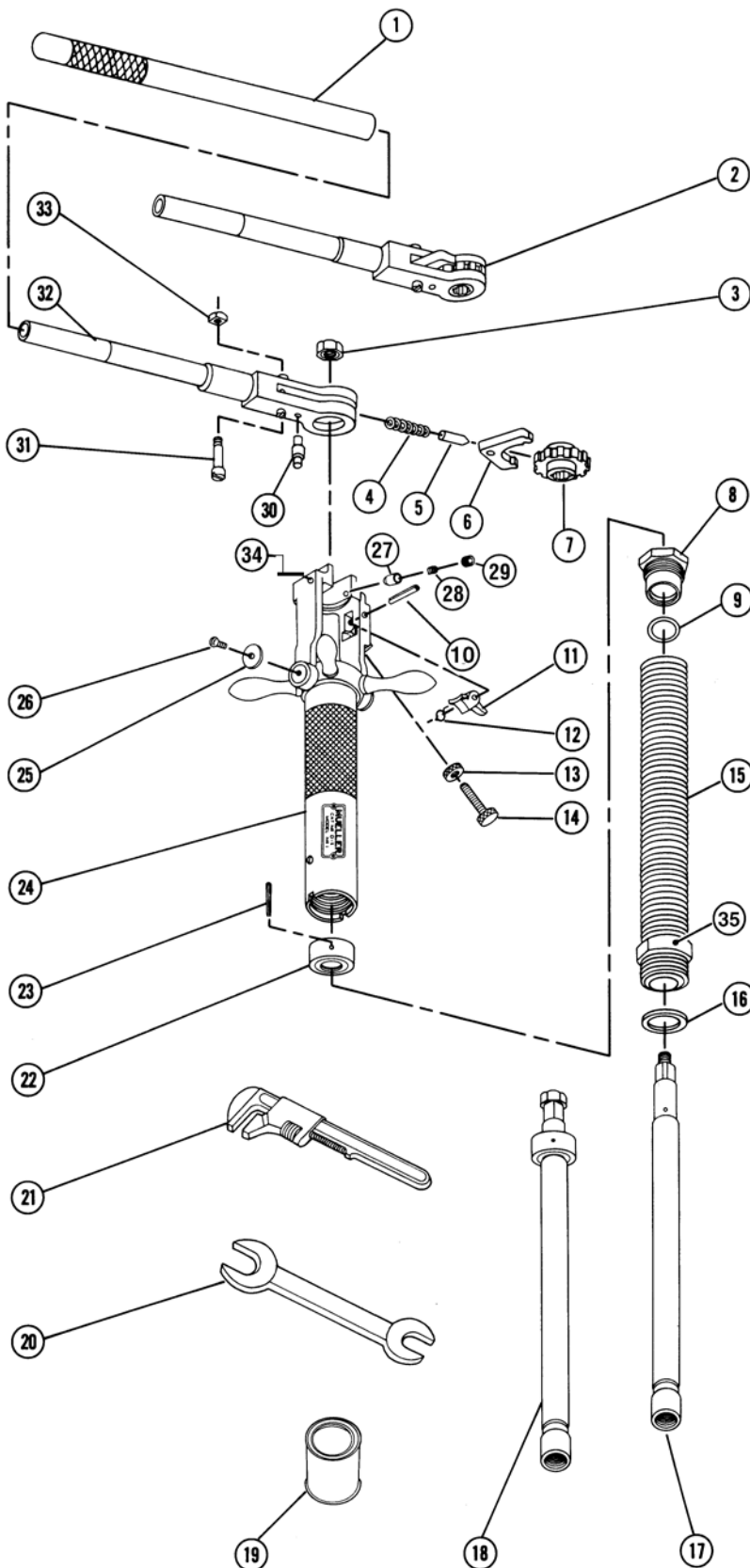


Weight	
Total shipping weight	60.5 lbs.
Machine only weight	34 lbs.

Mueller® NO-BLO® Operations performed by the MUELLER® D-5 Machine

Item	Size*							Mueller NO-BLO Operation
	3/4"	1"	1-1/4"	1-1/2"	2"	-		
Mueller NO-BLO Service Tees	3/4"	1"	1-1/4"	1-1/2"	2"	-	Drill main, insert or extract completion plug, make stop-off	
Mueller NO-BLO Service Stop Tees	1/2"	3/4"	1"	1-1/4"	2"	-	Drill main, insert or extract stem and bushing, recondition body seat	
Mueller NO-BLO Curb Stop Tees	1"	1-1/4"	2"	-	-	-	Drill main, insert or extract stem, recondition body seat	
Mueller NO-BLO Steel Valves	1"	-	-	-	-	-	Insert or extract stem, recondition body seat	
Mueller NO-BLO Service Line Stopper Fittings	1"	1-1/4"	1-1/2"	2"	2-1/4"	2-1/2"	Drill main, insert or extract completion plug, make stop-off	
Mueller Low Pressure Line Stopper Fittings	3/4"	1"	1-1/4"	2"	3"	4"	Drill main, insert or extract completion plug, make stop-off	
Mueller Save-A-Valve Drilling Nipples	1"	1-1/4"	1-1/2"	2"	2-1/2"	3"	Drill main, insert or extract completion plug	

*The size of Mueller NO-BLO Tees, as used in this table, refers to the size of the inlet. The size of Mueller Steel Valves, Service Line Stopper Fittings, Low Pressure Line Stopper Fittings and Save-A-Valve Drilling Nipples refers to the nominal size.



Item No.	Part No.	Part Name
1	86391	Handle Extension
2	85308	Ratchet Handle
3	46029	Retaining Nut
4	40007	Spring
5	40006	Spring Pin
6	40004	Ratchet Dog
7	40137	Ratchet Wheel
8	51377	Packing Gland
9	51458	O-ring (3)
10	502027	Rollpin
11	502025	Pivot Arm
12	502026	Pivot Arm Spring
13	502029	Lock Nut
14	502028	Operating Screw
15	36758	Body
16	33278	Body Gasket (2)
17	503141	Boring Bar
18	580945	Boring Bar Complete
19	88366	Cutting Grease
20	58196	Wrench 1-1/16" X 1-1/4"
21	91664	Adjustable Wrech
22	580610	Friction Collar
23	48130	Friction Collar Rollpin
24	580946	Feed Tube & Yoke Complete
25	50133	Washer
26	79745	Retaining Screw
27	500851	Detent (2)
28	59810	Detent Spring (2)
29	305006	Screw
30	40139	Stud
31	40138	Bolt*
32	80111	Handle Bar
33	46255	Nut*
34	312598	Detent Screw
35	41435	Body Plug

*Order both parts when replacing either one.
Metal Storage Chest 580969 (not illustrated)

NOTE: These illustrations are for parts identification only.
DO NOT use these illustrations for assembly or disassembly of machine.

Contact Mueller Customer Service Center for assistance.

Rev. 8-17 Shaded area indicates changes

Mueller® DH-5™ Machine — for drilling and stopping operations under pressure

- Catalog number – **39315**
- Hand, air or hydraulic power operation
- Used to install up to 4" Tees, Save-A-Valve® Drilling Nipples, and Line Stopper Fittings
- 14" (356 mm) boring bar travel
- Balanced pressure feature. Refer to machine operating manual for important precautions.
- 1200 psig (8273 kPa) maximum working pressure at 100 F (38 C)

NOTE: The working pressure or temperature rating is reduced accordingly if any attachment, valve, or fitting subjected to pressure or temperature during the drilling operation has a maximum working pressure or temperature rating less than that specified above.



Equipment furnished with each DH-5 machine:

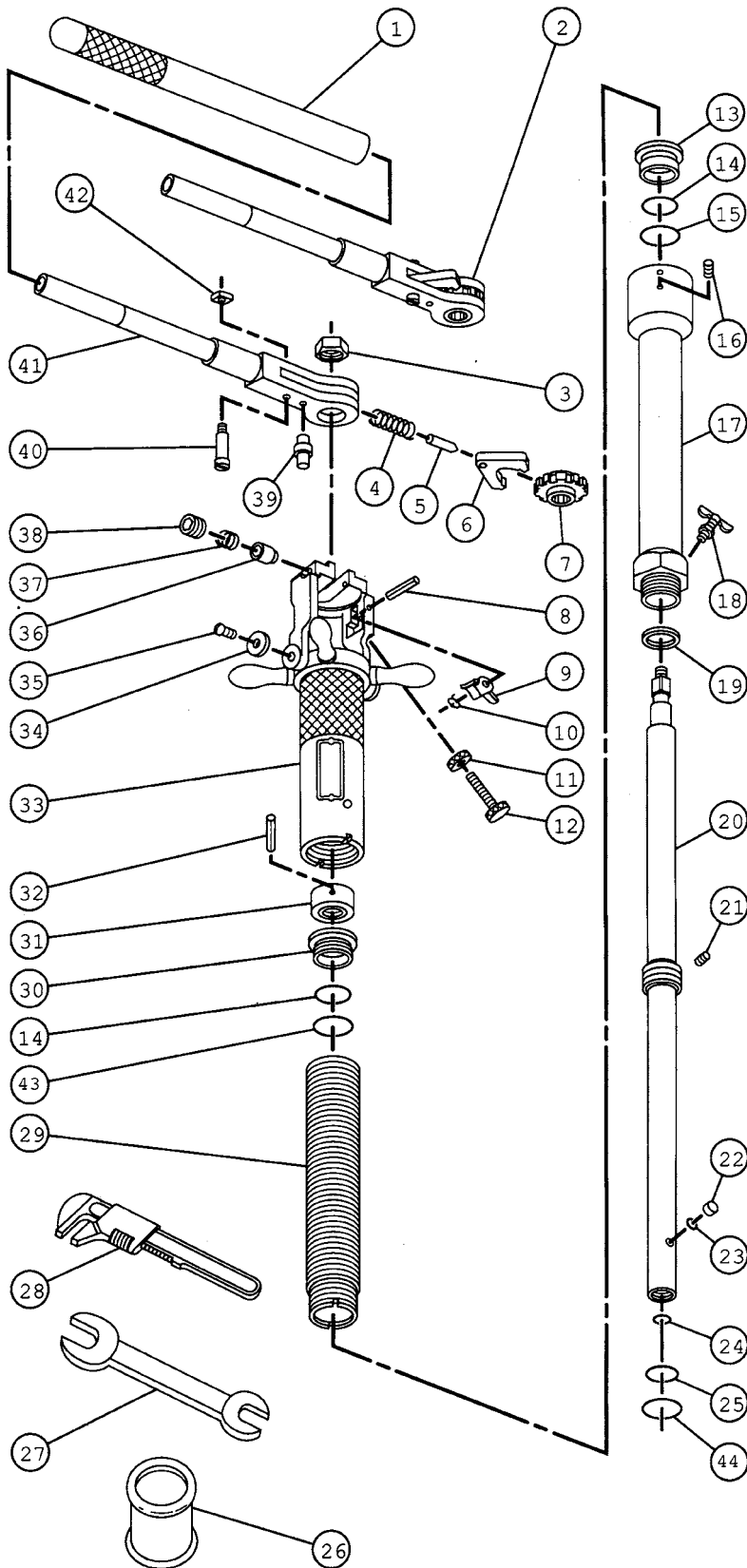
- Wooden Storage Chest (**680352**)
- Reversible Ratchet Handle (**85308**)
- Body Gasket (**33278**)
- Adjustable Wrench (**91664**)
- Double open end Wrench (**58196**)
- Cutting Grease (**88366**)
- Operating Instruction Manual (**Form 9675**)

Weight	
Total shipping weight	107 lbs.
Machine only weight	67 lbs.

Mueller® NO-BLO® Operations performed by the Mueller® DH-5 Drilling and Stopping Machine

Item	Size*							Mueller NO-BLO Operation
	3/4"	1"	1-1/4"	1-1/2"	2"	-	-	
Mueller NO-BLO Service Tees	3/4"	1"	1-1/4"	1-1/2"	2"	-	-	Drill main, insert or extract completion plug, make stop-off
Mueller NO-BLO Service Stop Tees	1/2"	3/4"	1"	1-1/4"	2"	-	-	Drill main, insert or extract stem and bushing, recondition body seat
Mueller NO-BLO Curb Stop Tees	1"	1-1/4"	2"	-	-	-	-	Drill main, insert or extract stem, recondition body seat
Mueller NO-BLO Steel Valves	1"	-	-	-	-	-	-	Insert or extract stem, recondition body seat
Mueller NO-BLO Service Line Stopper Fittings	1"	1-1/4"	1-1/2"	2"	2-1/4"	2-1/2"	-	Drill main, insert or extract completion plug, make stop-off
Mueller Low Pressure Line Stopper Fittings	3/4"	1"	1-1/4"	2"	3"	4"	-	Drill main, insert or extract completion plug, make stop-off
Mueller Save-A-Valve Drilling Nipples	1"	1-1/4"	1-1/2"	2"	2-1/2"	3"	-	Drill main, insert or extract completion plug

*The size of Mueller NO-BLO Tees, as used in this table, refers to the size of the inlet. The size of Mueller Steel Valves, Service Line Stopper Fittings, Low Pressure Line Stopper Fittings and Save-A-Valve Drilling Nipples refers to the nominal size.



Item No.	Part No.	Part Name
1	86391	Handle Extension
2	85308	Ratchet Handle
3	46029	Retainer Nut
4	40007	Spring
5	40006	Spring Pin
6	40004	Ratchet Dog
7	40137	Ratchet Wheel
8	502027	Rollpin
9	502025	Pivot Arm
10	502026	Pivot Arm Spring
11	502029	Lock Nut
12	502028	Operating Screw
13	503319	Body Bushing
14	79268	Boring Bar O-ring (6)
15	500652	O-ring
16	301170	Body Set Screw
17	503318	Body
18	40870	Bleeder Valve
19	33278	Body Gasket (2)
20	580991	Boring Bar Complete
21	500653	Retaining Screw
22	500654	Retainer Screw
23	500655	Screen
24	51427	Freeze Plug
25	78827	Boring Bar O-ring
26	88366	Cutting Grease
27	58196	Wrench
28	91664	Adjustable Wrench
29	89276	Cylinder
30	526254	Cylinder Bushing
31	580992	Friction Collar
32	503324	Rollpin
33	580994	Feed Tube And Yoke Complete
34	50133	Washers
35	79745	Retainer Screws
36	500851	Detents
37	59810	Detent Springs
38	305006	Detent Retainer Screws
39	40139	Stud
40	40138*	Bolt
41	80111	Handle Bar
42	46255*	Nut
43	48175	O-ring
44	45374	O-ring (3)

*Order both parts when replacing either one.
Wooden Storage Chest 680352 (not shown)

NOTE: These illustrations are for parts identification only.
DO NOT use these illustrations for assembly or disassembly of machine.

Mueller Co. offers a machine repair service.
Contact Mueller Customer Service Center for details.

Rev. 12-06 Shaded area indicates changes

Mueller® Unit No.1 H-17135 Stopping Machine – for stopping operations under pressure

- Catalog number – H-17135
- Hand operation
- Used to stop-off 1-1/2" to 4" Line Stopper Fittings
- Body has integrally cast bypass boss tapped 1-1/4" N.P.T. thread
- Has boring bar locking mechanism for safe, positive operation
- Use on cast iron, ductile iron pipe or steel pipe
- 125 psig (862kPa) maximum working pressure at 100 F (38 C)

NOTE: The working pressure or temperature rating is reduced accordingly if any attachment, valve, or fitting subjected to pressure or temperature during the drilling operation has a maximum working pressure or temperature rating less than that specified above.



H-17135

Equipment furnished with each H-17135 stopping machine:

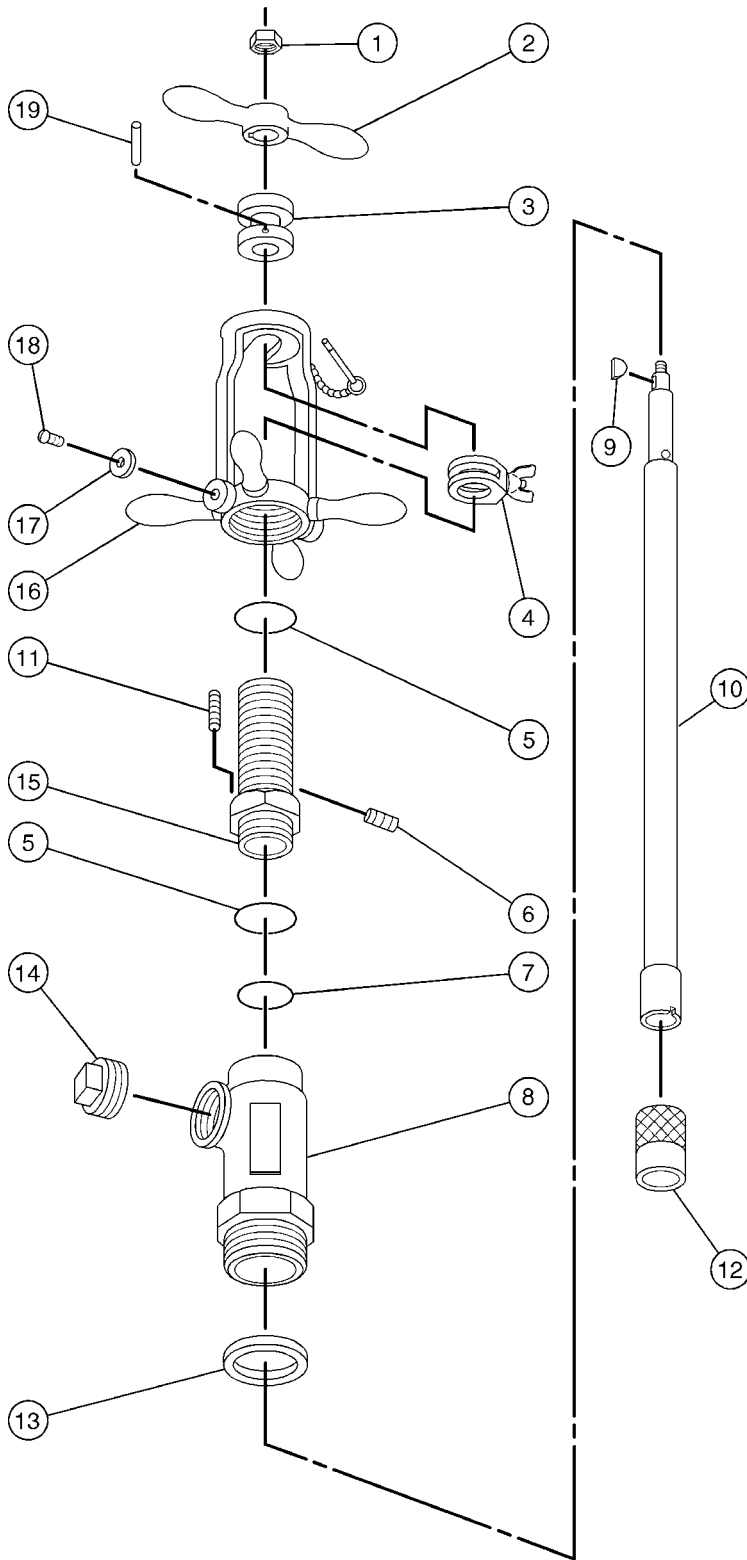
- Wood Storage Chest (302549)
- Operating Instruction Manual (Form 8517)

Weight	
Total shipping weight	39 lbs.

Mueller® NO-BLO® Operations performed by the Mueller® H-17135 Machine

Item	Size*			Mueller NO-BLO Operation
Mueller NO-BLO Service Line Stopper Fittings	1-1/2"	2"	2-1/2"	Make stop-off, insert or extract completion plug
Mueller Low Pressure Line Stopper Fittings	2"	3"	4"	Make stop-off, insert or extract completion plug

*The size refers to the nominal size of Mueller Line Stopper Fittings and Low Pressure Line Stopper Fittings.



Item No.	Part No.	Part Name
1	58849	Nut
2	36286	Handle
3	36294	Collar
4	83913	Clamping Collar Assembly
5	46726	Inserting Bar O-ring (2)
6	41435	Oil Plug
7	79266	Feed Sleeve O-ring
8	36275	Body
9	98941	Key
10	36287	Inserting Bar
11	92926	Set Screw
12	36347	Coupler Sleeve
13	36297	Gasket
14	51263	Plug
15	501679	Feed Sleeve
16	88477	Feed Nut And Yoke Assembly (Includes 17 And 18)
	36444	Pin Only
	48610	Ring Only
	504225	Chain Only
	94005	Rivet Only
17	50133	Washer (2)
18	79745	Sems Fastener (2)
19	503287	Collar Pin

Wood Storage Chest 302549 (not shown)

NOTE: These illustrations are for parts identification only.
DO NOT use these illustrations for assembly or disassembly of machine.
Contact Mueller Customer Service Center for assistance.

Rev. 12-06 Shaded area indicates changes

Mueller® H-17040 Machine

- Catalog number – H-17040
- Hand operation
- Used to stop off 3/4", 1", and 1-1/4" service tees
- 8-1/4" (209 mm) boring bar travel
- Can only be used with H-10914 Bronze Gate Valve
- 125 psig (862 kPa) maximum working pressure at 100 F (38 C)

NOTE: The working pressure or temperature rating is reduced accordingly if any attachment, valve, or fitting subjected to pressure or temperature during the drilling operation has a maximum working pressure or temperature rating less than that specified above.

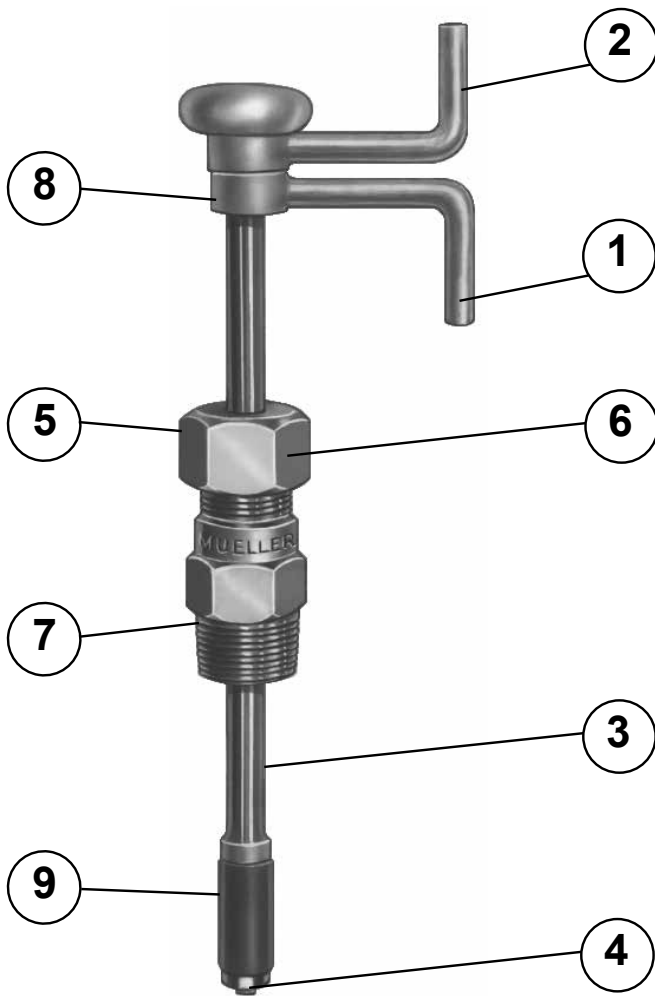


Weight	
Total shipping weight	3 lbs.
Machine only weight	2.5 lbs.

Mueller® NO-BLO® Operations performed by the Mueller® H-17040 Machine

Item	Size*			Mueller NO-BLO Operation
Mueller NO-BLO Service Tees	3/4"	1"	1-1/4"	Make stop-off

*The size of Mueller NO-BLO Tees, as used in this table, refers to the size of the inlet.



Item No.	Part Number	Size		
		3/4"	1"	1-1/4"
1	Handle	83442	83442	83442
2	Handle	83443	83443	83443
3	Shaft Tube	83444	89636	89638
4	Shaft	83441	89635	89637
5	Packing Nut	79180	79180	79180
6	Packing	79232	79232	79232
7	Body	52236	504645	504649
8	Washer	73612	73612	73612
9	Rubber Plug	52218	500755	500759
H-10914 Bronze Gate Valve		1-1/4"	1-1/4"	1-1/2"

* 3/4" applications require the 036969 (1-1/4"x1") reducing bushing on the top and bottom side of the 1-1/4" valve.

Rev. 12-06 Shaded area indicates changes

Mueller® H-17045 Machine

- Catalog number – **H-17045**
- Used to install or remove Completion Plugs, Stems And Bushings in 3/4" to 1- 1/2" Tees, Save-A-Valve® Drilling Nipples and Line Stopper Fittings
- 8-1/4" (209 mm) boring bar travel
- 125 psig (862 kPa) maximum working pressure at 100 F (38 C)

NOTE: The working pressure or temperature rating is reduced accordingly if any attachment, valve, or fitting subjected to pressure or temperature during the drilling operation has a maximum working pressure or temperature rating less than that specified above.



Equipment furnished with each H-17045 Machine:

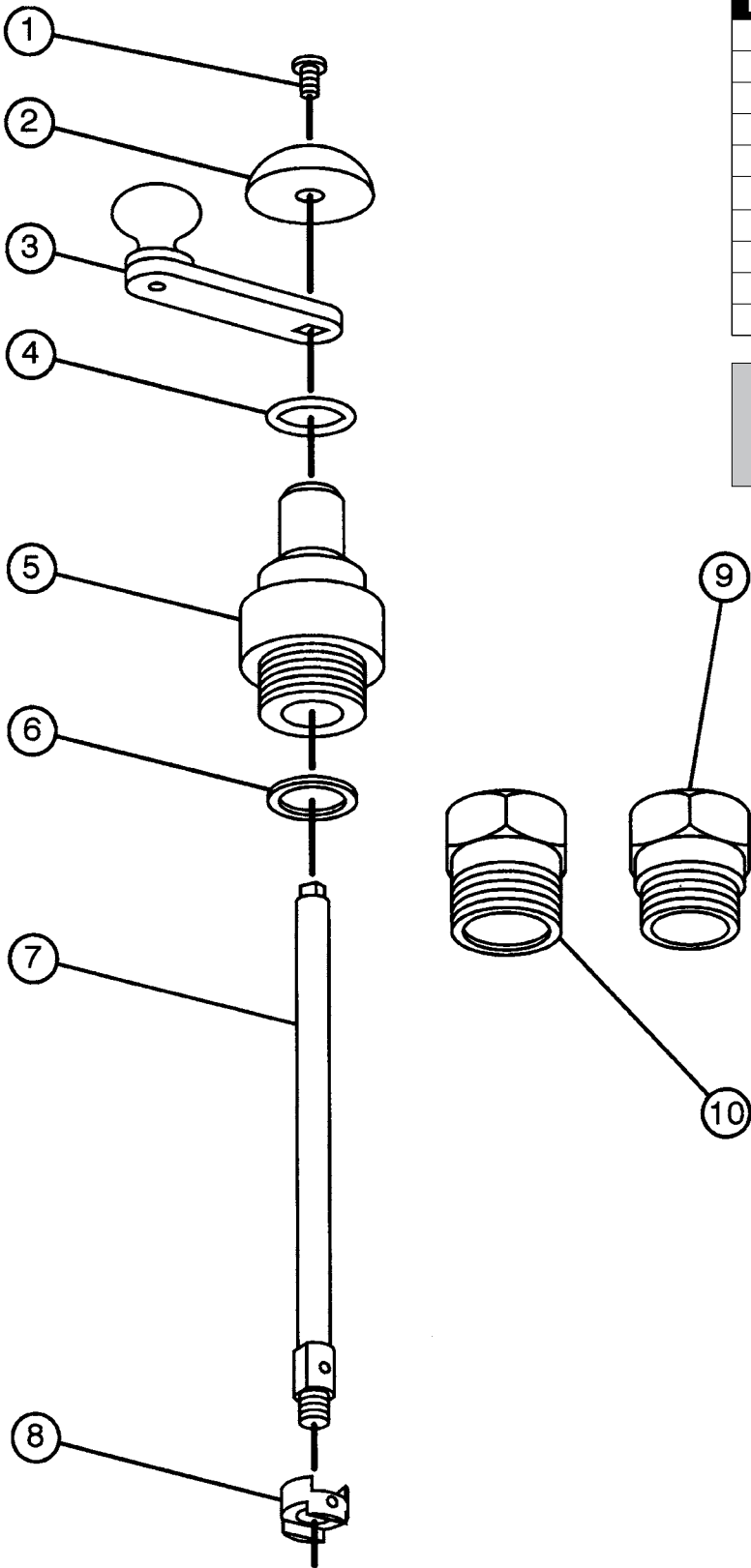
- 1-1/4" Machine Adapter Nipple (**36733**)
- 1-1/2" Machine Adapter Nipple (**33575**)
- Extracting Fork (**78897**)
- Two Body Gaskets (**47756**)
- Operating Instruction Manual (**Form 8547**)

Weight	
Total shipping weight	6 lbs.
Machine only weight	2.5 lbs.

Mueller® NO-BLO® Operations performed by the Mueller® H-17045 Machine

Item	Size*				Mueller NO-BLO Operation
Mueller NO-BLO Service Tees	3/4"	1"	1-1/4"	-	Insert or extract completion plug
Mueller NO-BLO Service Stop Tees	3/4"	1"	-	-	Insert or extract stem and bushing
Mueller NO-BLO Curb Stop Tees	3/4"	1"	1-1/4"	-	Insert or extract stem
Mueller NO-BLO Steel Valves	-	1"	-	-	Insert or extract stem
Mueller NO-BLO Service Line Stopper Fittings	3/4"	1"	1-1/4"	-	Insert or extract completion plug
Mueller Save-A-Valve Drilling Nipples	3/4"	1"	1-1/4"	1-1/2"	Insert or extract completion plug

*The size of Mueller NO-BLO Tee, as used in this table, refers to the size of the inlet. The size of Mueller Steel Valves, and Service Line Stopper Fittings refers to the nominal size of these items.



Item No.	Part No.	Part Name
1	56178	Screw
2	78853	Knob
3	80488	Handle Assembly
4	72239	O-ring
5	79181	Body
6	47756	Fiber Gasket
7	80492	Inserting Bar Assembly
8	78897	Fork
9	36733	"E" Machine X 1-1/4" M.I.P. Adapter
10	33575	"E" Machine X 1-1/2" M.I.P. Adapter

NOTE: These illustrations are for parts identification only.
DO NOT use these illustrations for assembly or disassembly of machine.
Contact Mueller Customer Service Center for details.

Rev. 8-17 Shaded area indicates changes

Mueller® H-17145 Machine

- Catalog number – **H-17145**
- Hand operation
- Used to install or remove Completion Plugs, Stems And Bushings in 1/2" to 3" Service Stop and Curb Stop Tees, Steel Valves and Save-A-Valve® Drilling Nipples
- Balanced pressure feature. Refer to machine operating manual for important precautions.
- Integral pressure relief valve
- 8-1/4" (209 mm) inserting bar travel
- 1200 psig (8273 kPa) maximum working pressure at 100 F (38 C)

NOTE: The working pressure or temperature rating is reduced accordingly if any attachment, valve, or fitting subjected to pressure or temperature during the drilling operation has a maximum working pressure or temperature rating less than that specified above.



Equipment furnished with each H-17145 Machine:

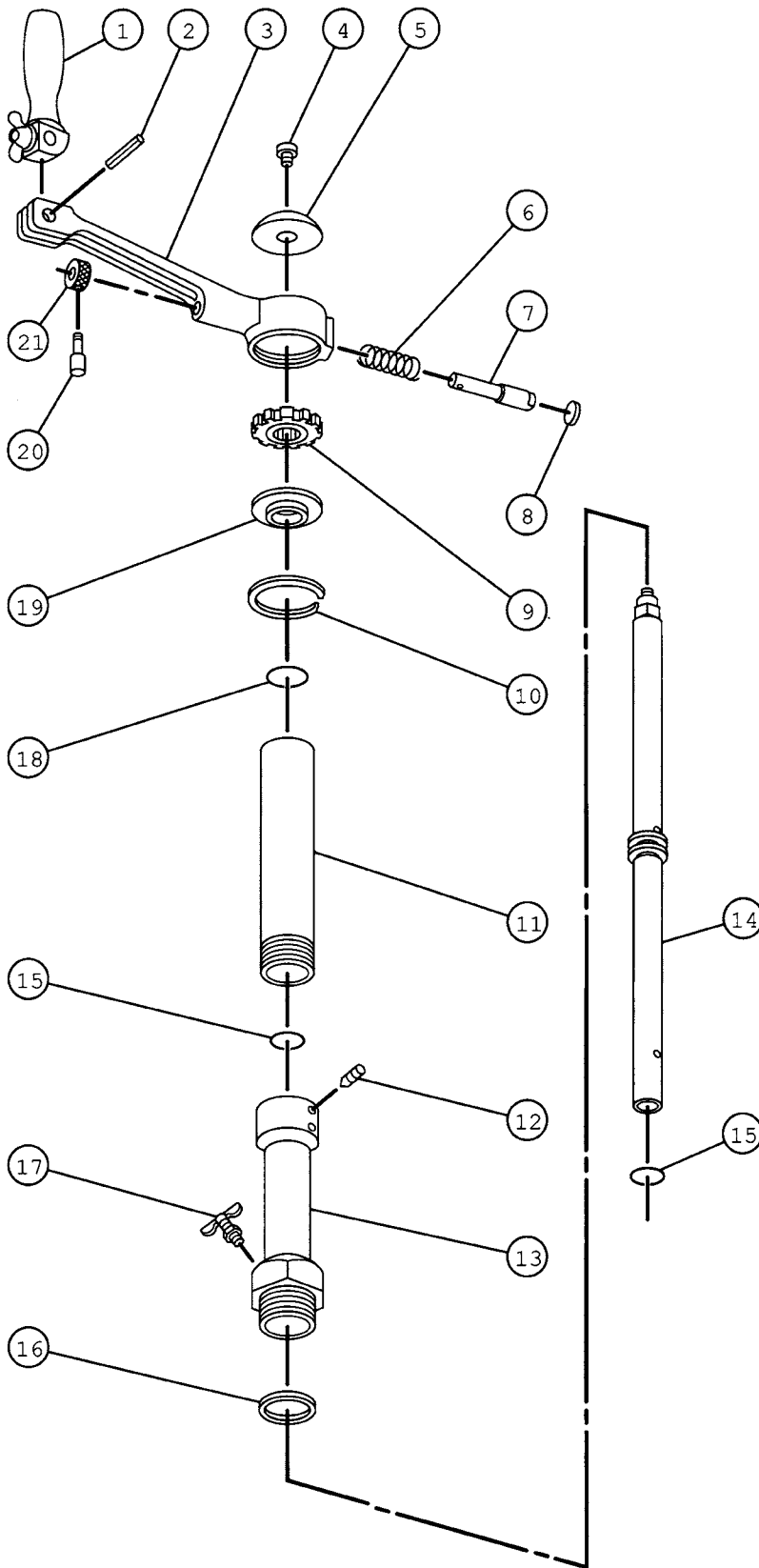
- Wooden Storage Chest (**97408**)
- Body Gasket (**33278**)
- Reversible Ratchet Handle (**83409**)
- Operating Instruction Manual (**Form 8833**)
- Machine uses D-series machine adapter nipples
- Machine uses E-series inserting/extracting tools

Weight	
Total shipping weight	17 lbs.
Machine only weight	13 lbs.

Mueller® NO-BLO® Operations performed by the Mueller® H-17145 Machine

Item	Size*								Mueller NO-BLO Operation
	3/4"	1"	1-1/4"	1-1/2"	2"	-	-		
Mueller NO-BLO Service Tees	3/4"	1"	1-1/4"	1-1/2"	2"	-	-	Insert or extract completion plug	
Mueller NO-BLO Service Stop Tees	1/2"	3/4"	1"	1-1/4"	2"	-	-	Insert or extract stem and bushing	
Mueller NO-BLO Curb Stop Tees	-	-	1"	1-1/4"	2"	-	-	Insert or extract stem	
Mueller NO-BLO Steel Valves	-	1"	-	-	-	-	-	Insert or extract stem	
Mueller Save-A-Valve Drilling Nipples	3/4"	1"	1-1/4"	1-1/2"	2"	2-1/2"	3"	Insert or extract completion plug	

*The size of Mueller NO-BLO Tees, as used in this table, refers to the size of the inlet. The size of Mueller Steel Valves, Service Line Stopper Fittings, Low Pressure Line Stopper Fittings and Save-A-Valve Drilling Nipples refers to the nominal size.



Item No.	Part No.	Part Name
1	54459	Crank Handle
2	500635	Pin
3	51484	Handle
4	56178	Knob Screw
5	78853	Knob
6	37883	Spring
7	51426	Ratchet Dog
8	51427	Freeze Plug
9	33390	Ratchet Wheel
10	51428	Retaining Ring
11	40872	Cylinder
12	96993	Cylinder Set Screw
13	40873	Body
14	40871	Shaft
15	79350	O-ring
16	33278	Body Gasket
17	40870	Bleeder Valve
18	79345	Cylinder O-ring
19	51482	Bushing
20	500803	Operating Pin
21	37863	Detent Knob

Wooden Storage Chest 97408 (not illustrated)

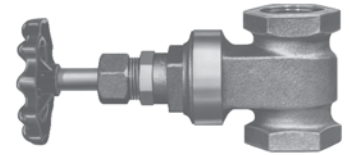
NOTE: These illustrations are for parts identification only.
DO NOT use these illustrations for assembly or disassembly of
machine.
Contact Mueller Customer Service Center for assistance.

Rev. 8-17 Shaded area indicates changes

Bronze Gate Valve – 125 psig (862kPa) maximum working pressure at 100 F (38 C)

H-10914 – Bronze gate valve

Sizes				
1-1/4"	1-1/2"	2"	2-1/2"	3"
Lay Length (face to face)				
2.75"	2.812"	3.375"	4.812"	4.625"
Center Line of Valve to End of Handle				
5.22"	6.25"	7.06"	8.41"	10"



**H-10914
Bronze Gate Valve**

Control Chamber - 125 psig (862 kPa) maximum working pressure at 100 F (38 C)

H-17025 – Control Chamber connects directly to E Series machines and is used on steel tees. It has a bypass/equalizing valve feature, and comes complete with 1", 1-1/4" and 1-1/2" adapter bushings.

Control chamber adapter bushings				
1/2"	3/4"	1"	1-1/4"	1-1/2"
503080	502232	78829	78830	78831



**H-17025
Control Chamber**

Spanner Wrench

44628 – Spanner Wrench for use with H-17025 Control Chamber adapter bushings.



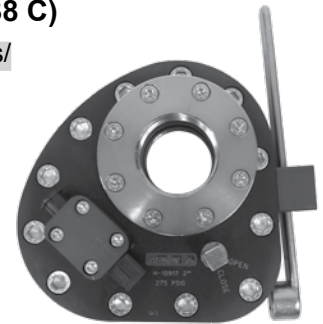
**44628
Spanner Wrench**

Slide Gate Valve - 275 psig (1896 kPa) maximum working pressure at 100 F (38 C)

H-10917 – Slide gate valve with aluminum body, O-ring sealed steel slide gate and by-pass/equalizing valve is a low profile, quick acting control valve.

Sizes			
2"	2-1/2"	3"	4"

O-Ring Kits			
2"	2-1/2"	3"	4"
313111	313112	313113	313114



Steel Ball Valve - 2000 psig (13790 kPa) maximum working pressure at 100 F (38 C)

H-10918 – High pressure ball valve for use during No-Blo® tapping and stopping operations. This quarter-turn forged steel valve is available in 1-1/4", 1-1/2", 2", 2-1/2" and 3" sizes.

Sizes				
1-1/4"	1-1/2"	2"	2-1/2"	3"
Lay Length (face to face)				
4.37"	4.72"	5.53"	7.27"	8.02"
Center Line of Valve to End of Handle				
5.91"	6.85"	6.85"	8.84"	13.74"

Repair/gasket replacement kits				
1-1/4"	1-1/2"	2"	2-1/2"	3"
682626	682627	682628	682629	682630

Replacement Ball				
1-1/4"	1-1/2"	2"	2-1/2"	3"
312897	312896	312895	312894	312893



**H-10918
Steel Ball Valve**

H-604 Air Power Operator

- Catalog number **H-604**
- Mounts directly to E-5™, EH-5™, D-5™, DH-5™ A-3 & B-101 machines without special adapters
- Reversible air motor
- 35 RPM maximum free speed
- Air supply: 55 cubic feet of free air per minute at 90 psig
- Total shipping weight 66 lbs. (30 kg)
- Machine only weight 43 lbs. (20 kg)
- Shipped in a wooden box
- Motor includes in-line oiler (P/N 311817)



H-604 Air Power Operator

IMPORTANT: MAINTAIN PRESSURE OF 90 PSIG AT THE OPERATOR —THE USE OF A GAGE AT THE THROTTLE TO DETERMINE THE ACTUAL PRESSURE OF AIR AT THE POWER OPERATOR IS RECOMMENDED.

H-704 Hydraulic Power Operator

- Catalog number **H-704**
- Use with E-5™, EH-5™, D-5™, DH-5™, A-3 & B-101 drilling machines
- Reversible operation
- Removable handle for efficient storage
- Preset safety relief valve prevents over-torque conditions
- Flow Range — 7 to 9 gpm (27-34 lpm)
- Motor Speed — 33 rpm at 8 gpm (30 lpm)
- Maximum Pressure (continuous) — 2000 psig (138 bar)
- Maximum Pressure (intermittent) — 2750 psig (190 bar)
- Total Shipping Weight — 73 lbs (33 kg)
- Machine Only Weight — 52 lbs (24 kg)



H-704 Hydraulic Power Operator

Rev. 12-12 Shaded area indicates changes

Mueller® steel test caps for high pressure tee and fitting applications:

Inside IP Thread of Steel Cap	Part Number	Equivalent CI Cap Part Number
1"	537398	079159
1-1/4"	537399	079160
1-1/2"	537400	079161
2"	537401	036811
2-1/2"	537477	036812
3"	537478	036813

NOTE: Some tees and fittings use one size larger caps than the nominal size of the main product.
